

Instructions to Install GPS Map from PC to GPS

- 1) You must first Install Garmin Basecamp software for PC you can get the free software at the following link:

http://www8.garmin.com/support/download_details.jsp?id=4435/

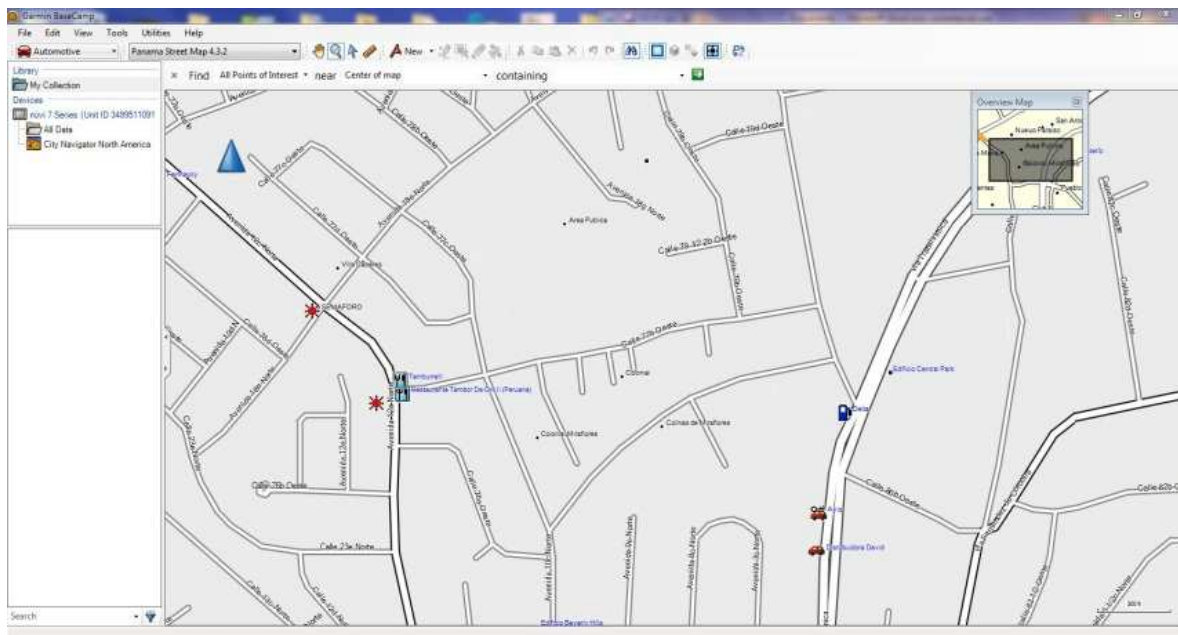
Install Basecamp once you install close the program. (important to Close)

- 2) Next send an email to adrsi@hotmail.com with your Unit Id Number which can be found on your GPS Device by following these steps:

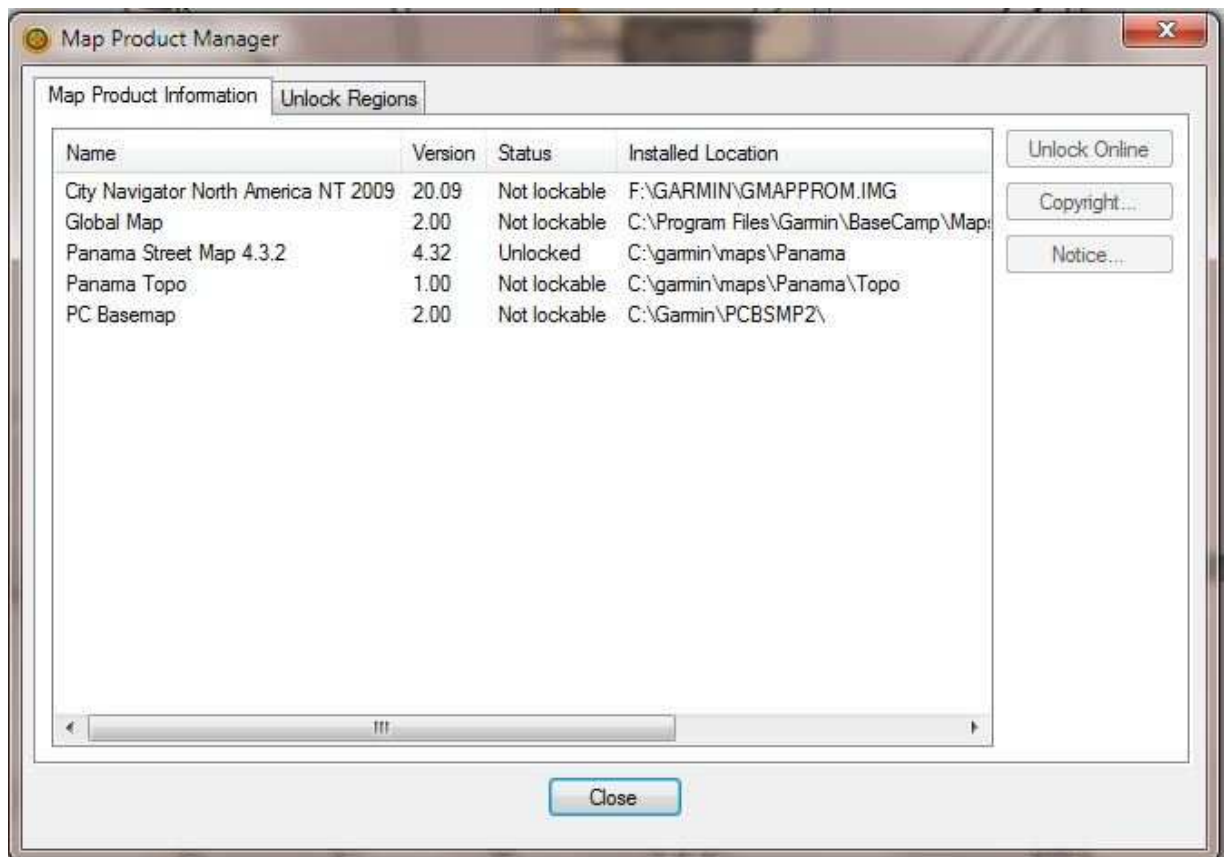
- a) Turn on Your GPS
- b) Go to TOOLS, SETTINGS, SYSTEM, ABOUT

Copy that number down and send it to Panama-GPS at adrsi@hotmail.com

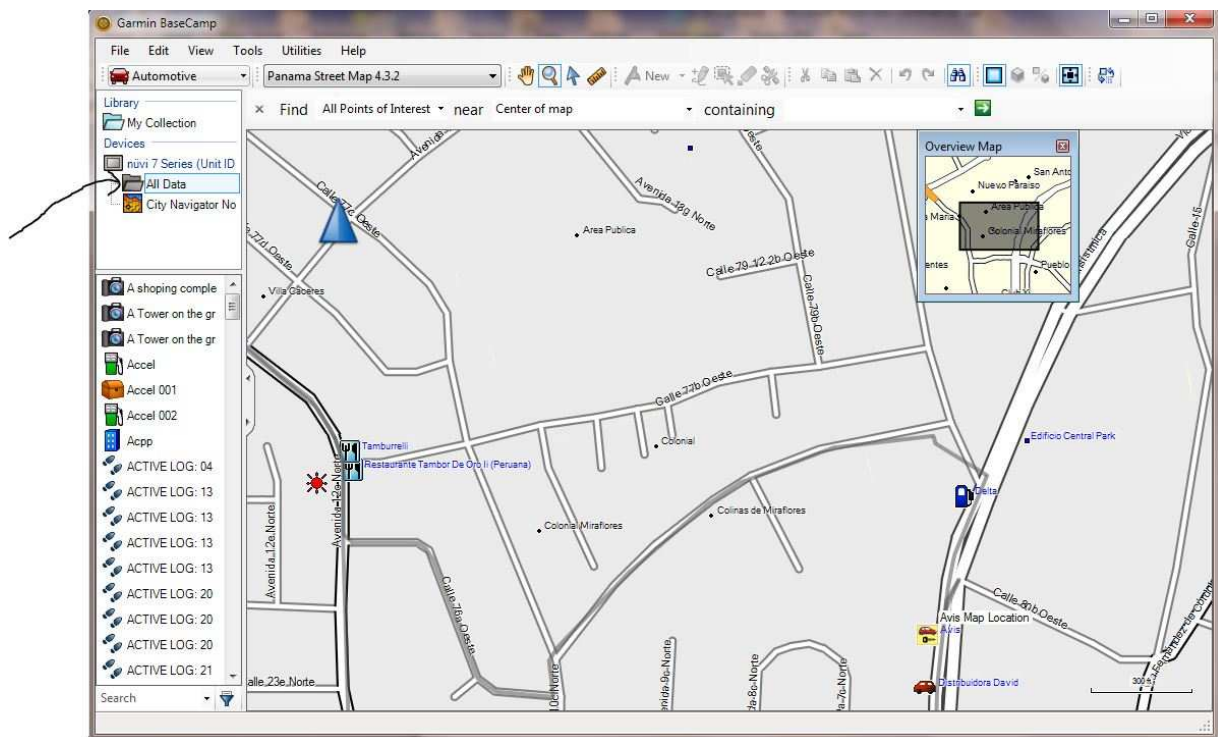
- 3) You will receive an unlock code you will need to keep your email open so you can copy and paste this number into the Garmin Basecamp.
- 4) Go to our MEMBER SIGN IN AREA, using the User name and Password we have provided scroll to the bottom of the screen where you will see DOCUMENTS FOLDER
- 5) **Download and install version 3.3.4 first**
- 6) Now open Basecamp to make sure you see the map has been installed in Basecamp. You will see a screen that looks like this an on tool bar you will see Panama Street Map X.X.X.



- 7) You must next install your UNLOCK KEY which would have been sent to you after you found your UNIT ID Number.
- 8) On the Tool Bar you will see UTILITIES. Click on this.
- 9) Click on MANAGE MAP PRODUCTS
- 10) You will see this screen:



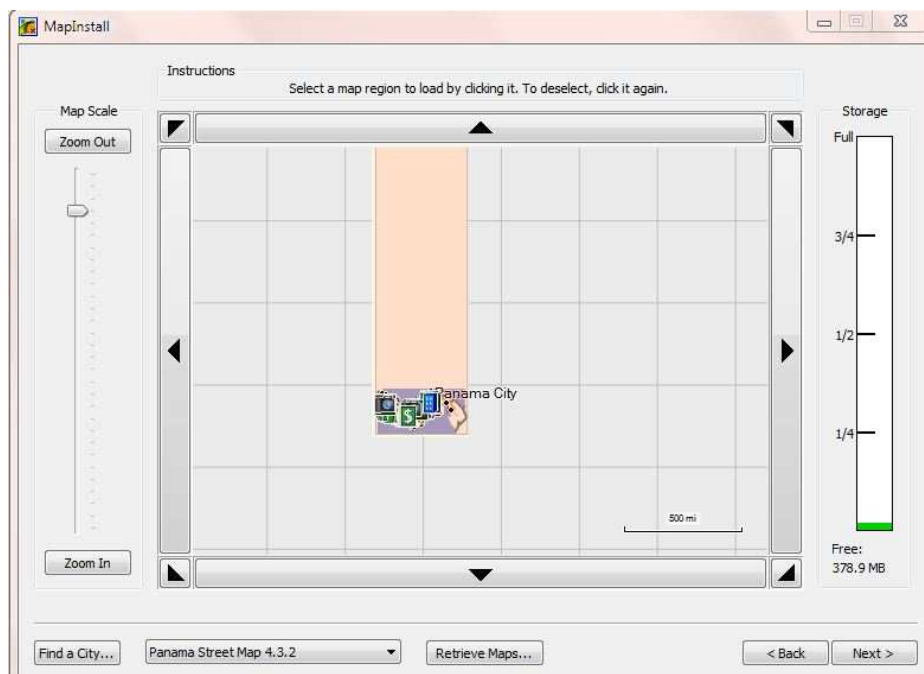
- 11) Click on the tab UNLOCK REGIONS
- 12) Click On Add you will see the next screen:



23) You will see welcome to MAPINSTALL WIZARD Click Next

24) You will now see WOULD YOU LIKE MAPINSTALL TO AUTOMATICALLY MAPS AROUND YOUR WAYPOINTS, ROUTES AND TRACKS – **Select YES**

25) You will now see this screen:



26) At this point you should see what appears as a small version of the map on and the area above the map is pink and on the right hand side you will see a small green line in the Storage area list.

27) If you see these items – CLICK ON NEXT

If you do not see the Pink area and the Green indicator on the right simply place you cursor in the area directly on the map ONE TIME LEFT CLICK your click is like a on – off switch. ON TO ACTIVATE, OFF TO DEACTIVATE MAP Selection YOU MUST SEE THE GREEN ON THE RIGHT SIDE.

28) The map will begin to install on your GPS, once it is completed, you are done.

TO VERIFY THE MAP HAS BEEN TRANSFERRED FOLLOW THESE INSTRUCTIONS:

- 1) Disconnect your GPS from the Computer
- 2) Turn on Your GPS
- 3) Go to TOOLS, SETTINGS, MAP, INFO, you should now see Panama Street Map X.X.X

Understand if you are not in Panama the maps will only show streets and directions only when you are actually in Panama, the reason being the GPS unit Uses the Satellites to load the map.

