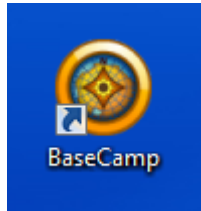


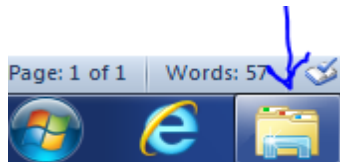
UPDATE OF NEW MAPS ON GPS UNITS

PANAMA-GPS

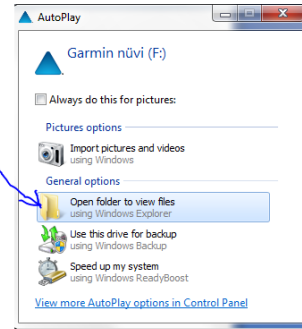
- 1) Download from Web www.dropbox.com OR our web site, when you receive message about new maps.
- 2) Run and install PANGPS.MSI file this will update the maps in Basecamp
- 3) Open Basecamp



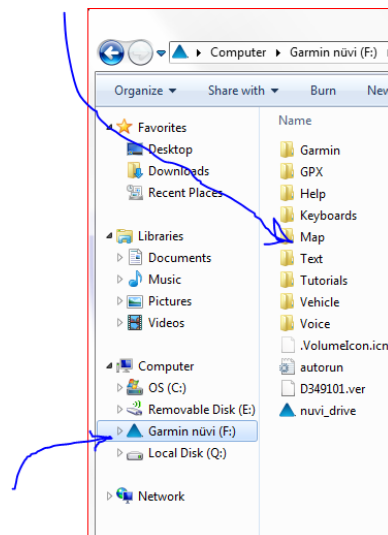
- 4) Do not Turn on GPS the computer will turn it on
- 5) Connect GPS To computer by USB
- 6) Go to Computer access



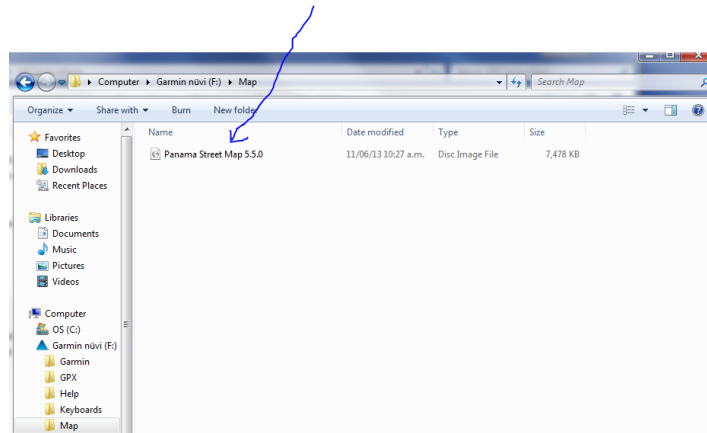
- 7) Next open the GPS unit on your computer



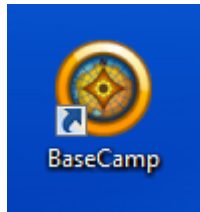
- 8) Open Folder Map on Garmin GPS



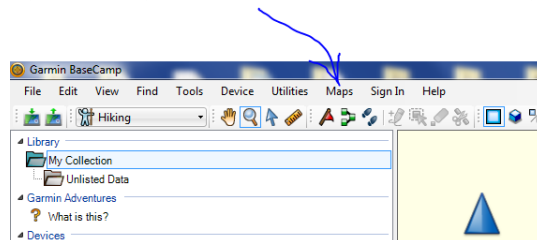
9) Delete any file in this folder whatever name it may be



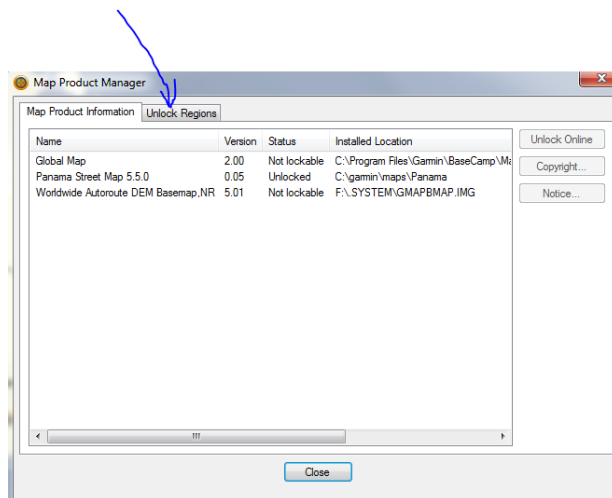
10) Go to Basecamp



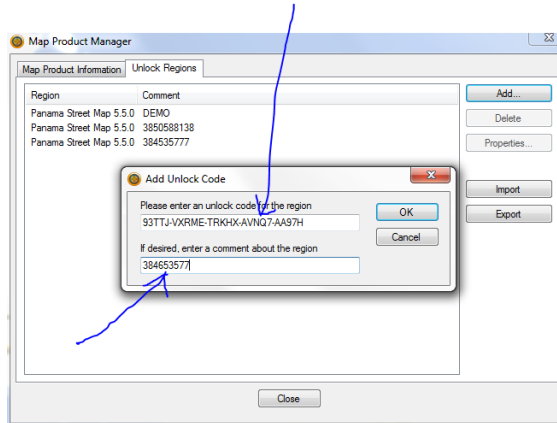
11) Open Map Tab in Garmin Basecamp



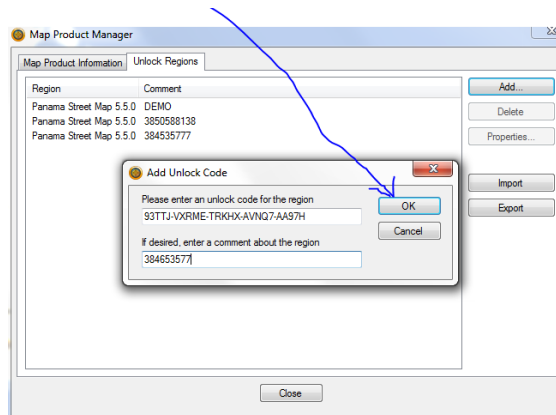
12) Go to MANAGE MAP PRODUCTS



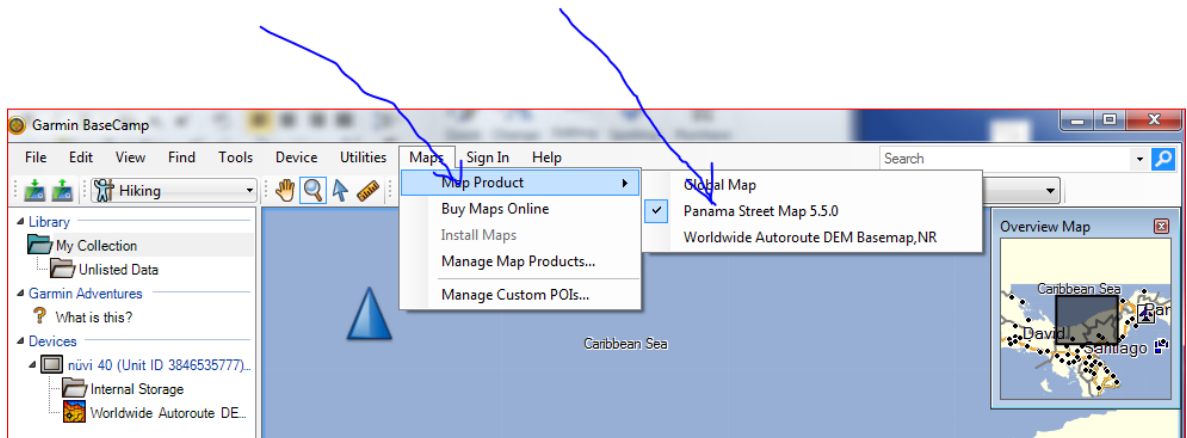
- 13) Click on ADD Now cut and paste the unlock key sent to you for this unit id each unlock key is special to each gps. The number below is special to the Unit ID number in this picture, each GPS will have its own unlock key.



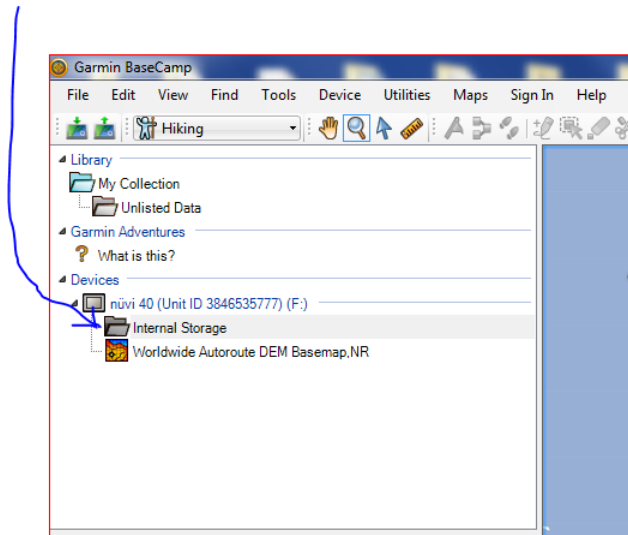
- 14) Click on OK



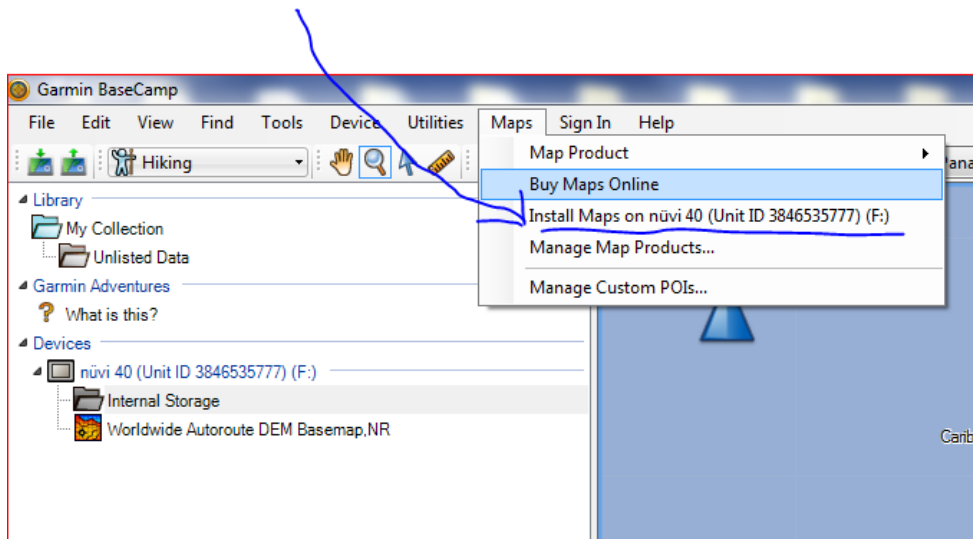
- 15) Open up Map and then click on Map Products to make sure the Panama map is selected with a check mark



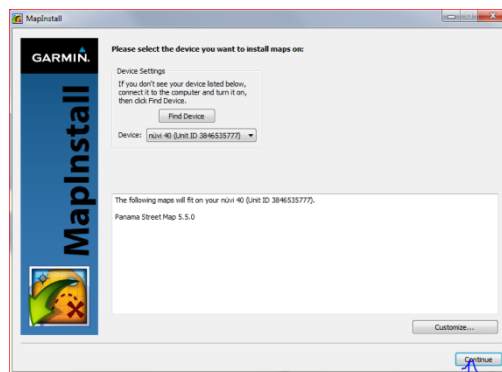
16) Click on the GPS Internal Memory tap to highlight



17) Click On Maps and then on Install Maps on nuvi XX (Unit id XXXXXXXXXXXXX)



18) Click on Continue



19) Click on Install



20) Click on Finish (map is now installed) you can disconnect the GPS and start again with the next GPS.

